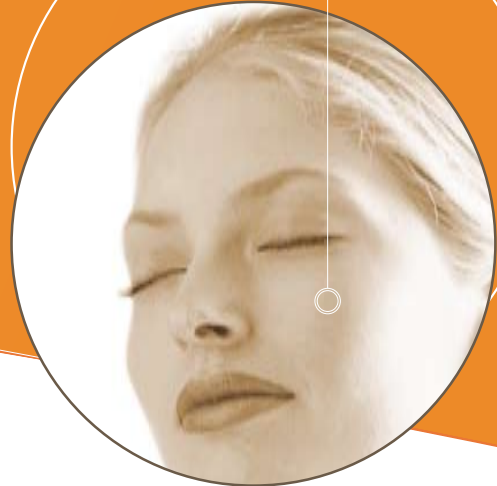


YPERION L800

*Photolifting[®] by SPL[®]
pulsed light*



➤ TECHNOLOGY

A unique patent for unprecedented comfort.

SPL technology is the most effective and most comfortable system on the pulsed light market: in effect energy is transmitted in the form of a single pulse of constant power. This technological advance makes it possible to work with optimal efficiency, while drastically reducing the risk of burning.

This machine, which is of unbeatable quality and offered at an attractive price, will enable you start up your pulsed light hair removal activity with a very small initial investment.

➤ EFFICIENCY

Guaranteed success.

- You want to offer your clients a complete facial treatment, which brings together:
 - Lines and wrinkles are less apparent.
 - Promotes firmer, more youthful looking facial contours and enhance facial features.
 - Evens out and lightens the complexion.
 - Tightens pores, refines skin's texture, helps diminish redness.
- Practically painless, this gives a stunning face from the very first treatment.
- The effectiveness of the treatment and a fortnightly maintenance operation coupled with the first sessions will ensure that you get immediate client loyalty.

➤ EASE OF USE

Ergonomic design for unprecedented ease of use.

- The ergonomic design of the hand unit, together with its light weight, make it exceptionally easy to handle, for faster, more precise and more comfortable treatment.
- An immediate selection of treatments from 84 pre-programmed functions.
- The simple and intuitive control panel allows immediate treatment personalization, simply by pressing it.

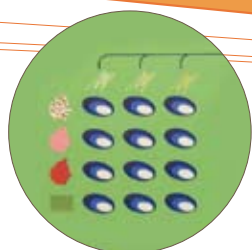
➤ SAFETY

Yperion L800, designed to minimize the risk of error.

- Activation protection.
- Light guide.
- Light spectrum fully secured (400-1000 nm).

YPERION L800

Technical details



➤ POWER

- Electrical energy of the generator : 900 joules
- Light energy delivered by flash from 3,6 to 36 joules
- Fluence from 4 to 14 joules/square centimetres
- Pulse duration: 1.5 to 30 milliseconds

➤ PARAMETERS

- Number of phototypes treated: 3
- Selection of type of treatment: 4 positions
- Adjustment bar graph: 7 positions
- Number of possible combinations: 84

➤ HAND UNIT

- Safety device to prevent untimely starting up
- Light guide
- Light guide protection system
- Treatment area: 2.4 square centimetres

➤ SMART CARD

- Integrated intelligent card reader
- Possibility of reprogramming the L800 by card
- Counter of units remaining
- Counter of units per area treated

➤ SAFETY

- CPED permanent checking of the energy supplied
- Hydraulic cooling circuit
- Active ventilation of the generator
- Ventilated thermal condenser
- Control of the water flow rate
- Cooling safety device
- Disconnection safety device for the hand-held equipment

YPERION L600

*Long-lasting hair removal using SPL®
pulsed light equipment*



➤ TECHNOLOGY

A unique patent for unprecedented comfort

SPL technology is the most effective and most comfortable system on the pulsed light market: in effect energy is transmitted in the form of a single pulse of constant power. This technological advance makes it possible to work with optimal efficiency, while drastically reducing the risk of burning.

This machine, which is of unbeatable quality and offered at an attractive price, will enable you start up your pulsed light hair removal activity with a very small initial investment.

➤ EFFICIENCY

Guaranteed success.

- Hair removal is the treatment which is most in demand.
- A smooth and silky skin all the year round with no constraints.
- Quick and efficient treatment
- The long-lasting results, for a treatment that is almost painless, can be seen from the very first session (10 to 30% of the hairs are removed).
- The effectiveness of the treatment and the fact that it may lead to other treatments implies obtaining the loyalty of the client straight away

➤ EASE OF USE

Ergonomic design for unprecedented ease of use.

- The ergonomic design of the hand unit, together with its light weight, make it exceptionally easy to handle, for faster, more precise and more comfortable treatment.
- An immediate selection of treatments from 112 pre-programmed functions.
- The simple and intuitive control panel allows immediate treatment personalization, simply by pressing it.

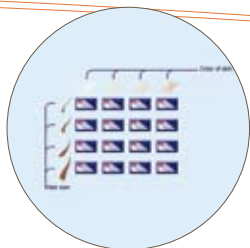
➤ SAFETY

Yperion L600, designed to minimize the risk of error.

- Activation protection .
- Light guide .
- Light spectrum fully secured (610-1000 nm).

YPERION L600

Technical details



➤ POWER

- Electrical energy of the generator : 900 joules
- Light energy delivered by flash from 3,6 to 96 joules
- Fluence from 11 to 16 joules/square centimetres
- Pulse duration: 20 to 45 milliseconds

➤ PARAMETERS

- Number of phototypes treated: 4
- Selection of hair type: 4 positions
- Adjustment bar graph: 7 positions
- Number of possible combinations: 112

➤ HAND UNIT

- Safety device to prevent untimely starting up
- Light guide
- Light guide protection system
- Treatment area: 5 square centimetres

➤ SMART CARD

- Integrated intelligent card reader
- Possibility of reprogramming the L600 by card
- Counter of units remaining
- Counter of units per area treated

➤ SAFETY

- CPED permanent checking of the energy supplied
- Hydraulic cooling circuit
- Active ventilation of the generator
- Ventilated thermal condenser
- Control of the water flow rate
- Cooling safety device
- Disconnection safety device for the hand-held equipment

YPERION L900

*Hair removal and photolifting®
by SPL pulsed light®*



➤ TECHNOLOGY

A unique patent for unprecedented comfort.

SPL technology is the most effective and most comfortable system on the pulsed light market: in effect energy is transmitted in the form of a single pulse of constant power. This technological advance makes it possible to work with optimal efficiency, while drastically reducing the risk of burning. .

This machine, which is of unbeatable quality and offered at an attractive price, will enable you start up your pulsed light hair removal activity with a very small initial investment.

➤ EFFICIENCY

Success is guaranteed: give yourself the possibility of offering two complementary types of treatment of excellent quality to your clients.

Progressive and long-lasting hair removal:

- Smooth and silky skin all the year round with no constraints.
- Rapid and effective treatment right from the first session (10 to 30% of the hairs are removed).

Photolifting is a complete facial treatment which brings together:

- Lines and wrinkles are less apparent.
- Promotes firmer, more youthful looking facial contours and enhance facial features.
- Evens out and lightens the complexion.
- Tightens pores, refines skin's texture, helps diminish redness.

The results of these two long-lasting and practically painless treatments are visible from the very first session.

The effectiveness of the treatment and the fact that it may lead to other treatments implies obtaining the loyalty of the client straight away.

➤ EASE OF USE

Ergonomic design for unprecedented ease of use.

- The ergonomic design of the hand unit, together with its light weight, make it exceptionally easy to handle, for faster, more precise and more comfortable treatment.
- An immediate selection of treatments from 196 pre-programmed functions.
- The simple and intuitive control panel allows immediate treatment personalization, simply by pressing it.

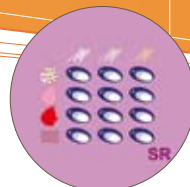
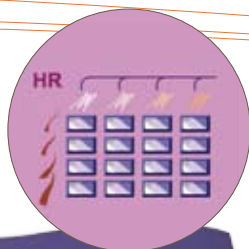
➤ SAFETY

Yperion L900, designed to minimize the risk of error.

- Activation protection.
- Light guide.
- Light spectrum fully secured (400-1000 nm).

YPERION L900

Technical details



➤ POWER

- Electrical energy of the generator : 1200 joules
- Light energy delivered by flash from 3,6 to 96 joules
- Fluence from 4 to 16 joules/square centimetres
- Pulse duration: 1.5 to 45 milliseconds

➤ PARAMETERS

- Number of phototypes treated: 4
- Adjustment bar graph: 7 positions
- Number of possible combinations: 196

➤ HAND UNIT

- Integrated intelligent card reader
- Light guide
- Light guide protection system
- Treatment area: 2.4 and 5 square centimetres

➤ SMART CARD

- Integrated intelligent card reader
- Possibility of reprogramming the L900 by card
- Counter of units remaining
- Counter of units per area treated

➤ SAFETY

- CPED permanent checking of the energy supplied
- Hydraulic cooling circuit
- Active ventilation of the generator
- Ventilated thermal condenser
- Control of the water flow rate
- Cooling safety device
- Disconnection safety device for the hand-held equipment